

■ CYL: Cylinder ■ HTW: Hand Tied Weft ■ MW: Machine Weft ■ QW: Q Weft ■ KER: Keratin Fusion ■ TAPE: Tape In ■ CLIP: Clip In

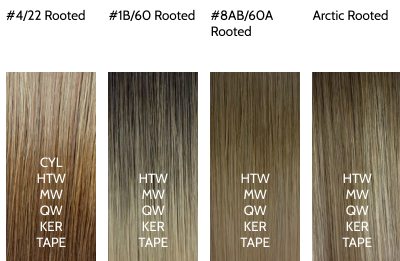
NATURALS



BALAYAGE



ROOTED



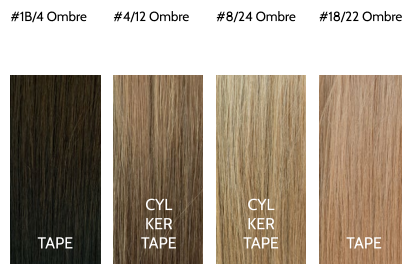
ROOT TAP



DUO TONE



OMBRE



CRAZY

